

ALL THINGS L.E.D.

Full color controller WIFI Set up manual

Suitable for HD-A30/A30+/C10/C30 series

I. Hardware connection (Software HD-Player **WINDOWS ONLY**)



Image 1 Hardware connected

The Full color Asynchronous controller with WIFI mode, has 3 types: AP mode, Station mode, Compatibility mode.

The controller default mode is AP mode .

- 1) AP mode: The controller itself be used as Hotspot, and windows PC connected that Hotspot, then the PC can control the controller.
- 2) Station mode: Via Hotspot of WIFI mode. The controller can be connected to the local router. Then a windows PC connected to the same router or network can control the LED display.
- 3) Compatibility mode: The controller itself be used as Hotspot and also connected the local network router. Then a windows PC can connect to the Hotspot directly to remote of the LED Display controller.

ALL THINGS L.E.D.

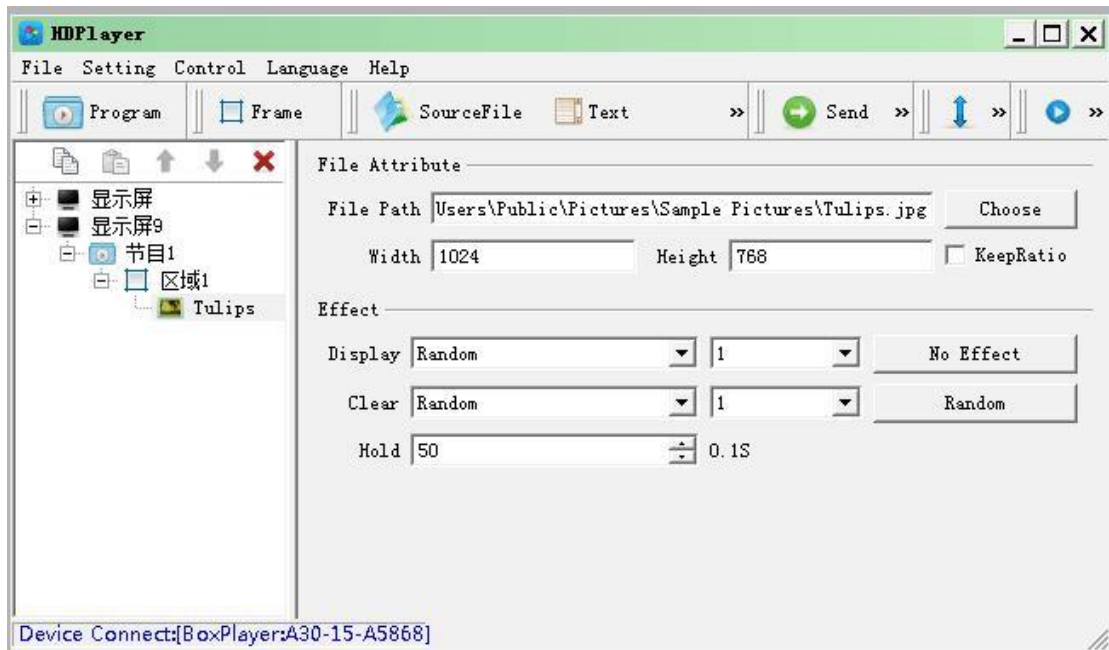
III. Details Manual

1. AP mode:

The controller itself be used as Hotspot, and the Hotspot is the ID of controller. The default password: 12345678



2) Open the Software of HDPlayer, it will have recognized the controller ID automatically



ALL THINGS L.E.D.

3) In software, Click Control-Wireless setting, then into setting.

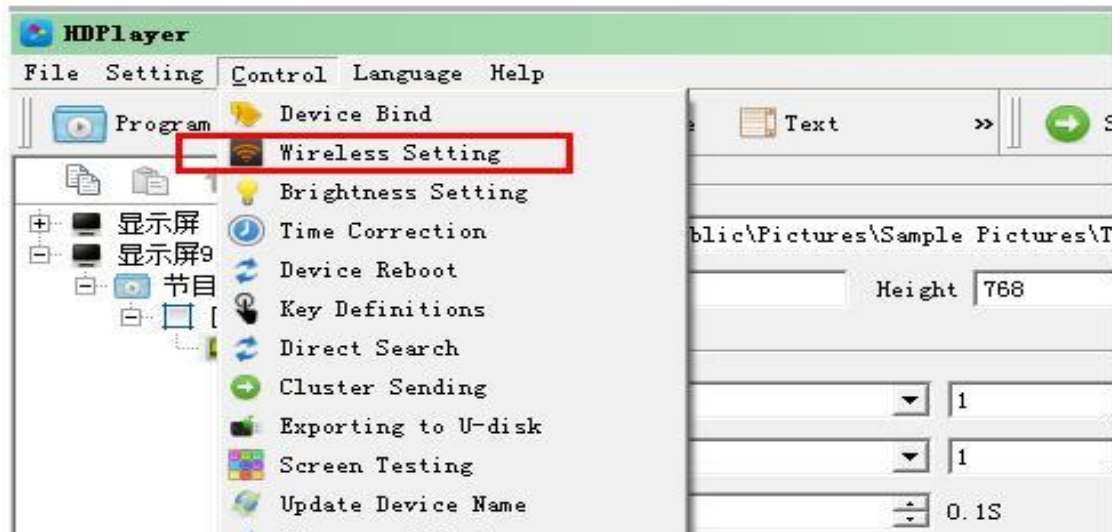
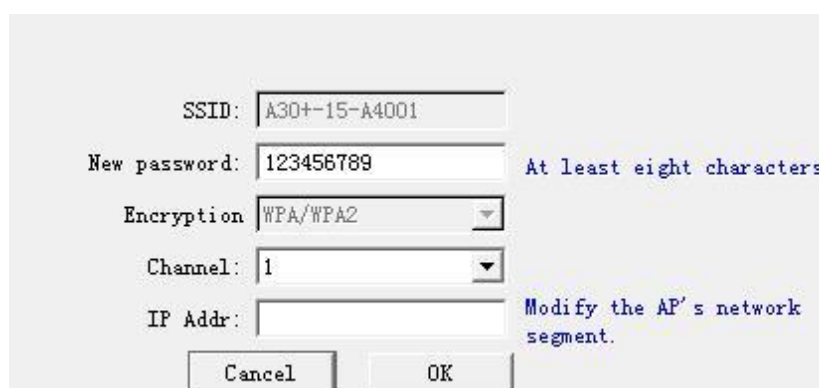


Image4 Wireless setting

4) Select AP mode---- Modify AP Information, change password etc. Then click "OK", and "Send"



Image5 AP mode



2. Station Mode

Select Station Mode in software, right click of the Station Mode, then will find the local WIFI router Signal, Or add the office WIFI router signal by hand. Then click “Send”

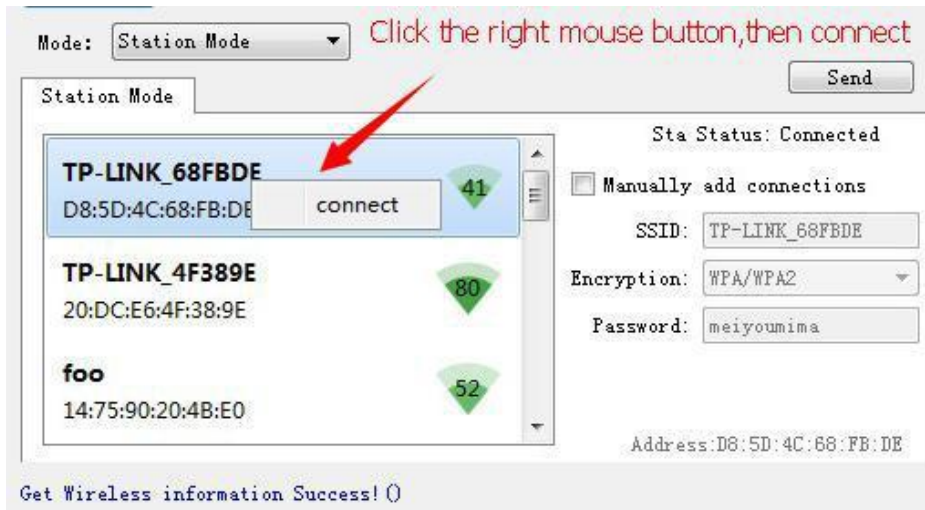


Image7 Station mode

Note: First setting the Station mode, it need add the office WIFI router Signal manually

3. Compatibility mode

Set up the AP mode and Station mode separately, then click “Send”

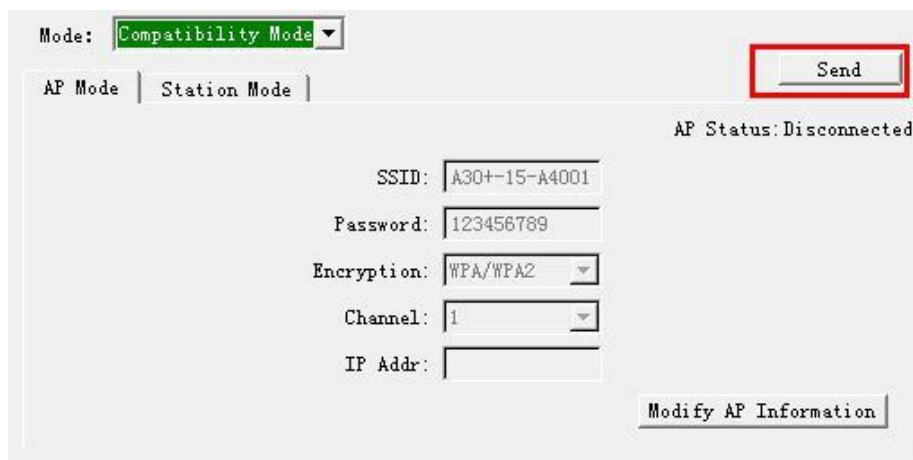


Image8 Compatibility Mode